

# 3 Installation of ThinManager

---

## 3.1 Standard ThinManager Installation

### 3.1.1 Windows Server 2003

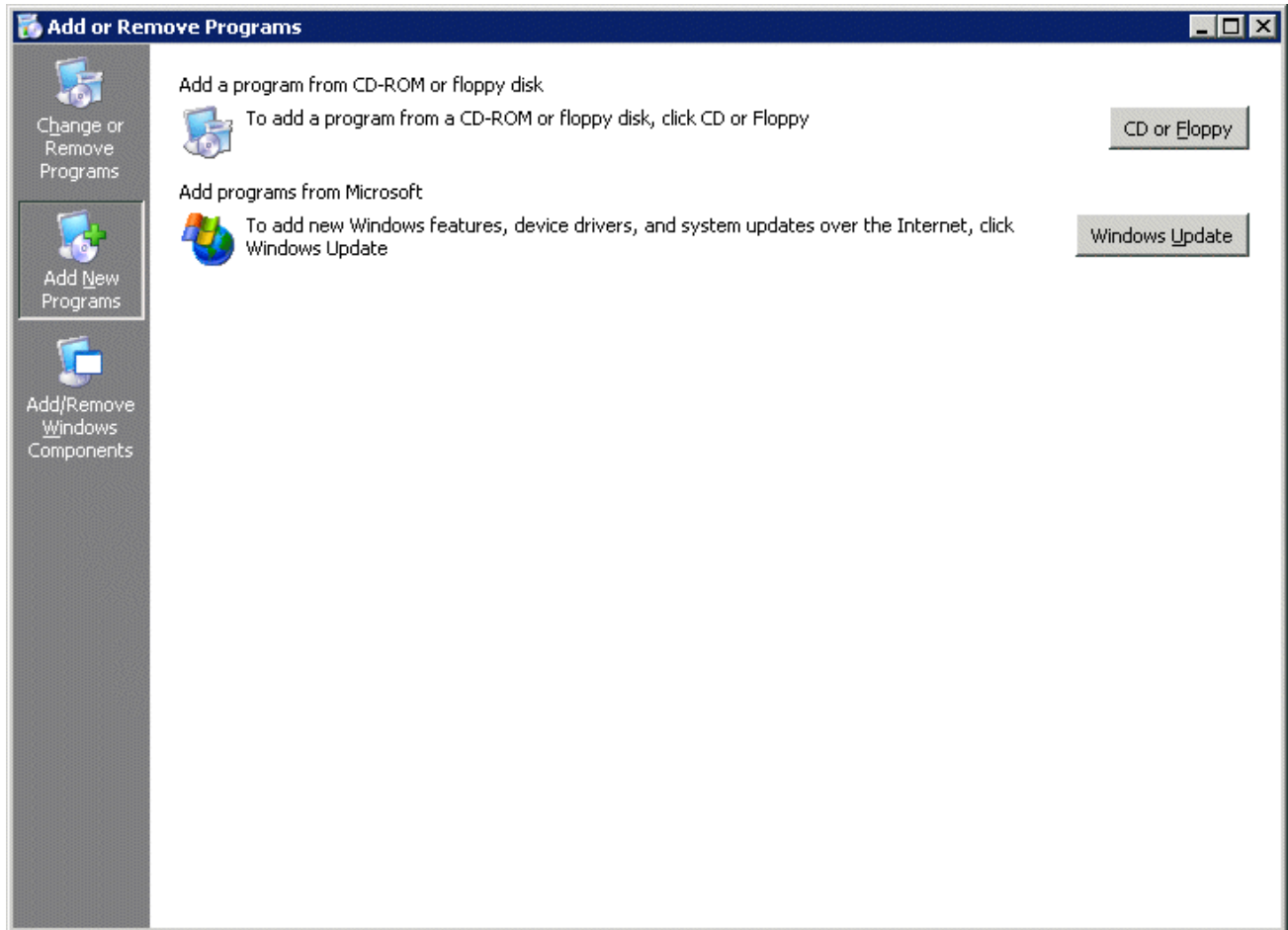
---

**Note:** The installation of the latest Microsoft .NET Framework may require a restart.

---

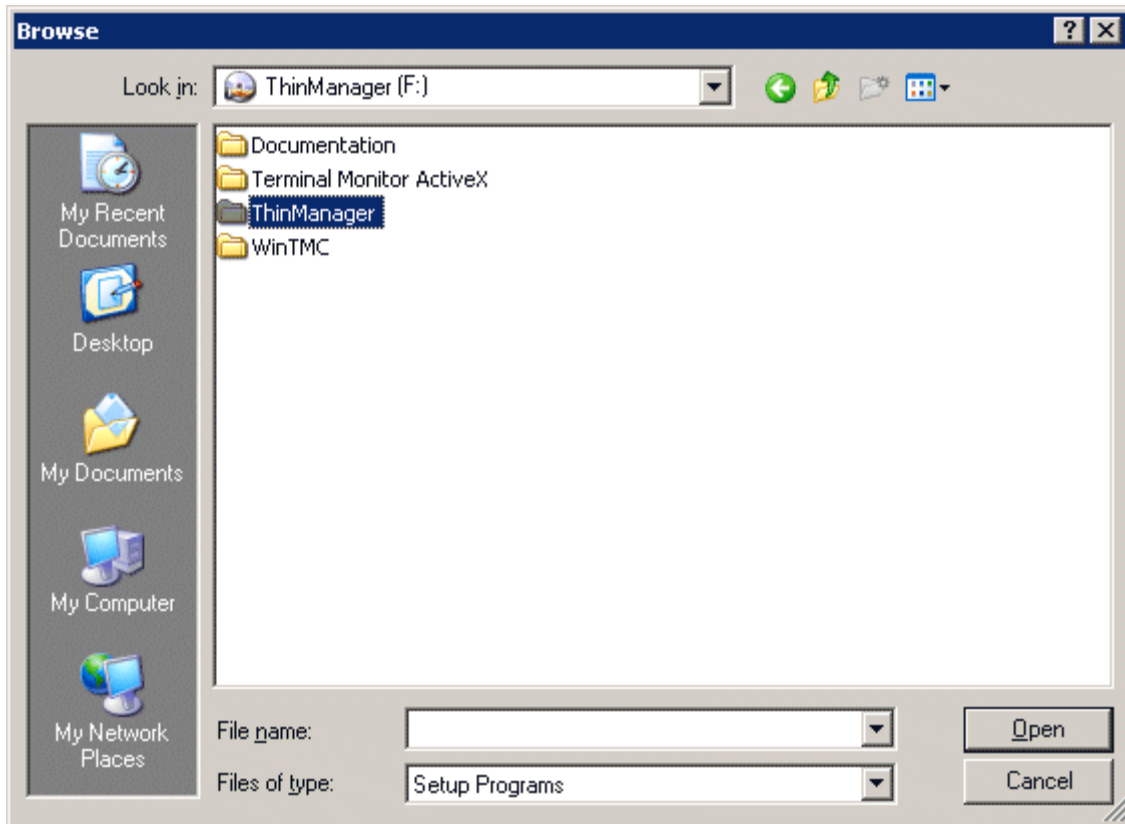
ThinManager can be installed on a Windows server or a workstation (NT 4.0 SP5 and later). On Microsoft Windows 2003/ 2008 Servers, software needs to be added in the **Install Mode** through the **Control Panel > Add/Remove Programs**. Failure to use the Install Mode can prevent an application from working properly.

Select **Start > Settings > Control Panel > Add/Remove Programs** to open the **Add/Remove Programs** dialog box.



*Add/Remove Programs*

Select the **CD or Floppy** button on the **Add/Remove Programs Properties** dialog box to open the Installation wizard. The wizard will prompt for the insertion of the ThinManager CD. When the CD is inserted, the wizard will ask for the path to the setup program.

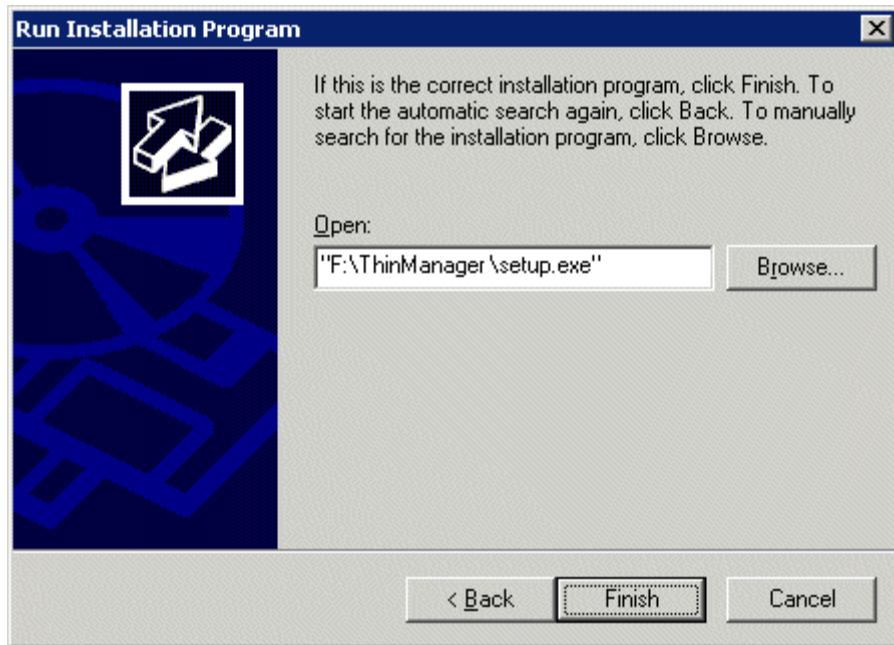


*Install CD File System*

The ThinManager CD has 4 folders.

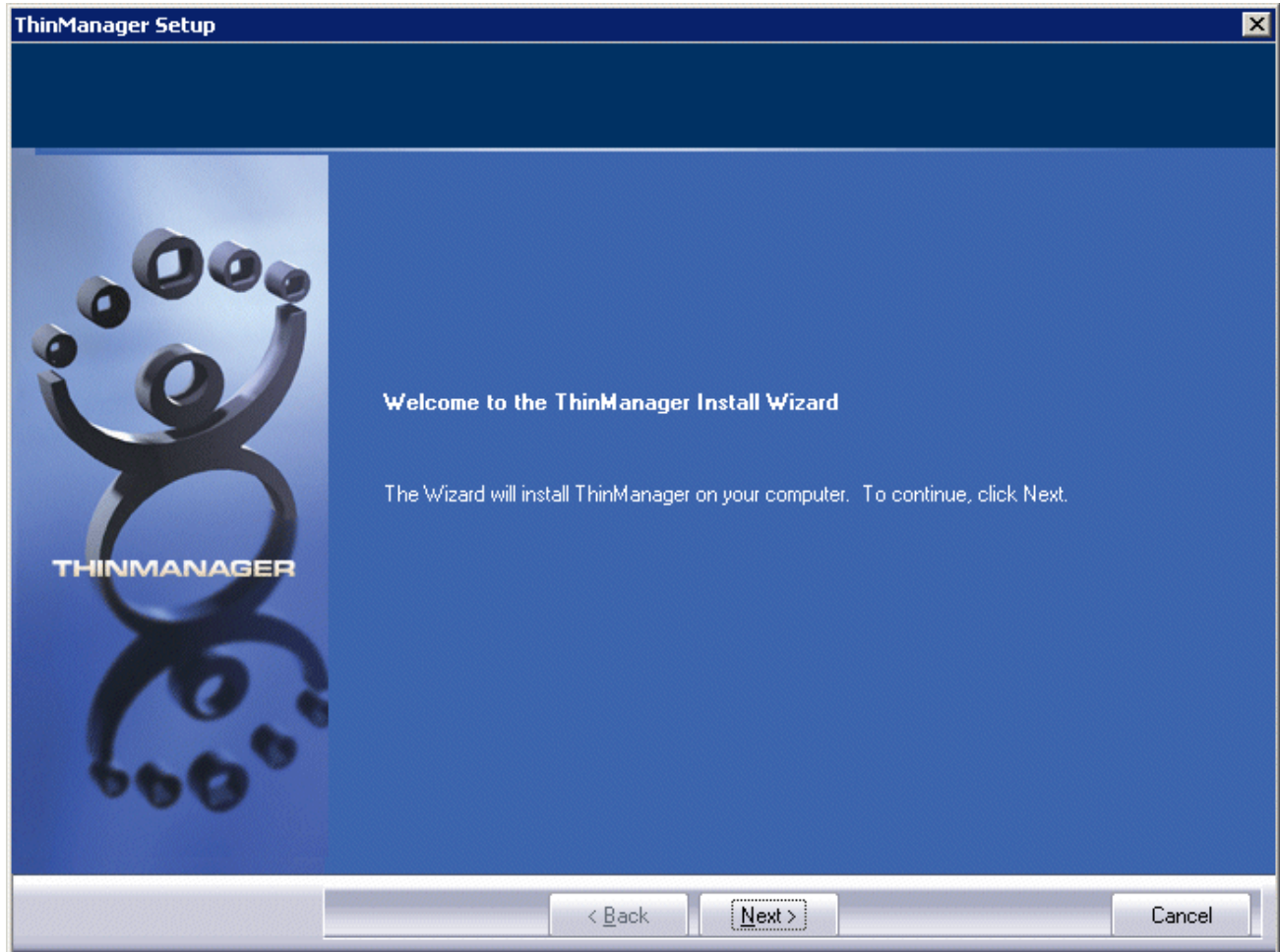
- **Documentation** – This folder contains a copy of this documentation in \*.pdf format.
- **Terminal ActiveX** – This folder contains the Terminal Monitor ActiveX and companion documentation. See TermMon ActiveX Control for details.
- **ThinManager**– This folder contains the ThinManager setup program.
- **WinTMC** – This folder contains the WinTMC setup program. See WinTMC Installation for details.

Browse to the **setup.exe** file in the ThinManager folder to install ThinManager.



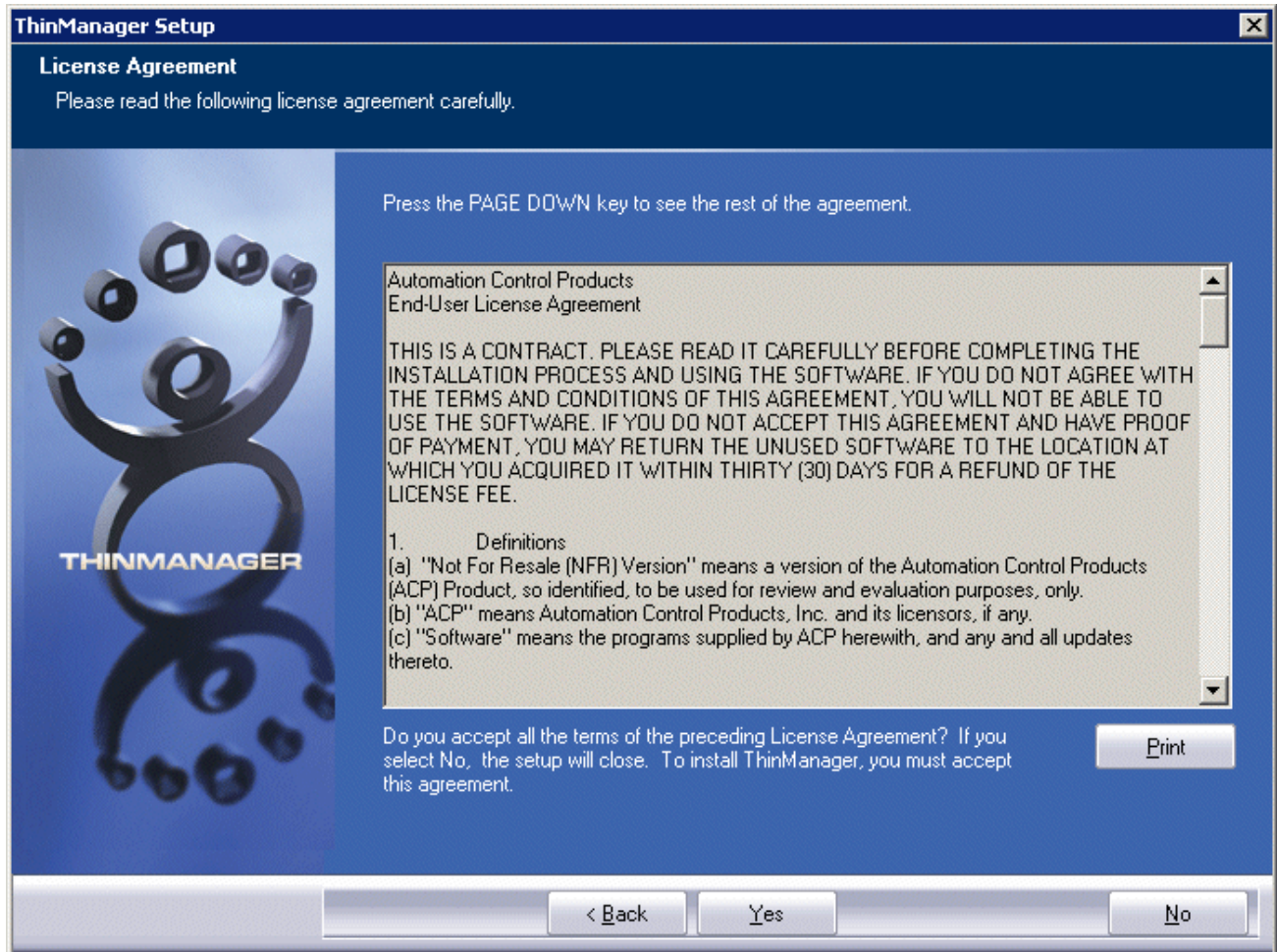
*Run Installation Program Window*

Once the ThinManager setup program is selected, select **Next** to continue the installation.



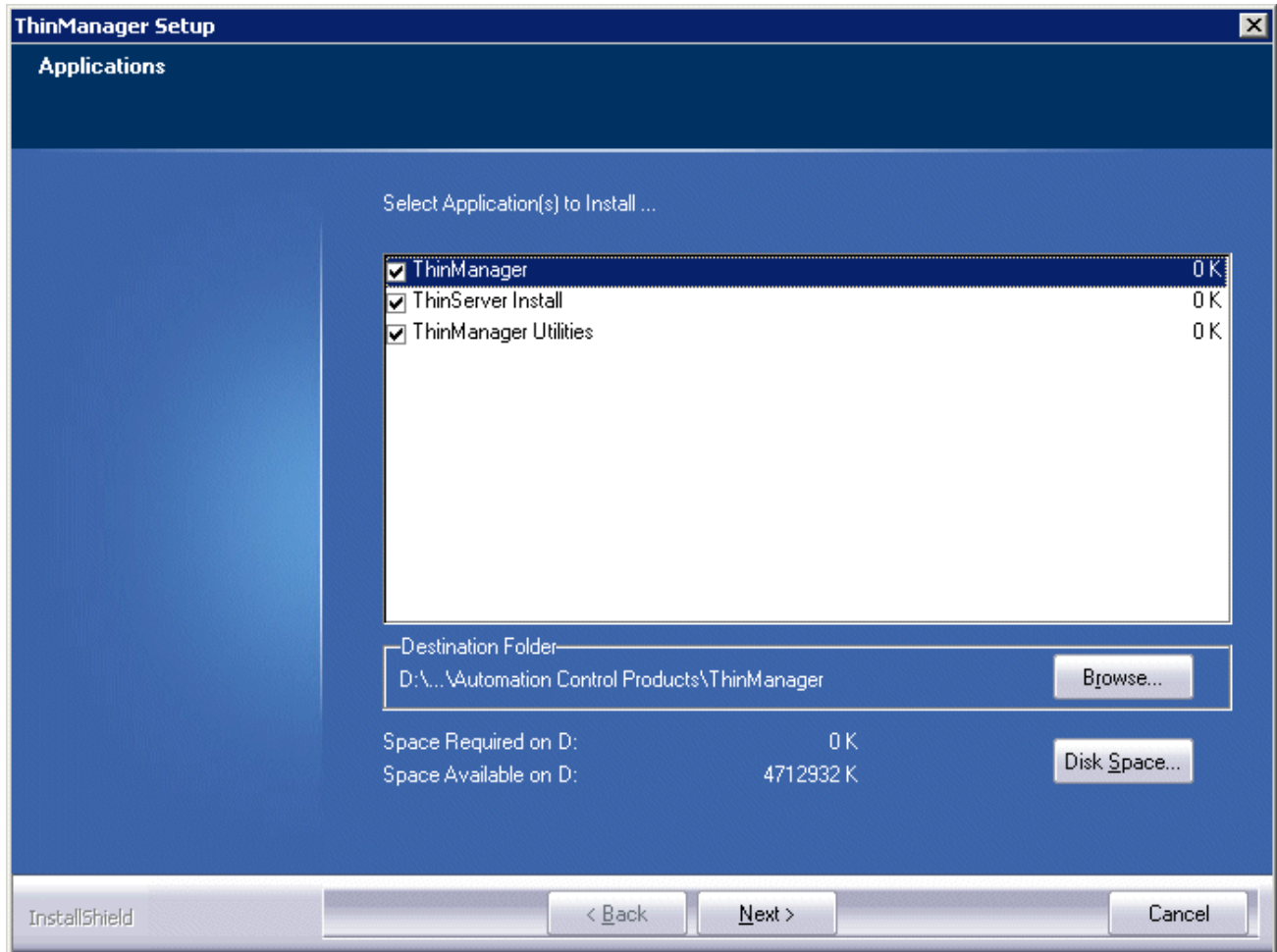
*ThinManager Setup Wizard*

The ThinManager Setup Wizard will lead the user through the installation process. Select **Next** to continue.



*End-User Licensing Agreement*

Read the End-User Licensing Agreement (EULA). If you agree to the conditions, select **Yes** to continue.



*Application Selection*

The installation wizard will display the components of the ThinManager installation. Although ThinManager appears to be a seamless program, it has two major components and utilities.

- **ThinManager** is the graphic user interface. It is installed to view and control the program.
- **ThinServer** is the engine that drives the program. It is a vital component that needs to be installed with ThinManager to allow thin clients to boot and be configured. ThinServer is the component that requires licensing. It is separated from ThinManager in the installation to allow additional instances of ThinManager to be installed for remote administration.
- **ThinManager Utilities** includes tools like the touch screen calibration program. These utilities need to be installed on every terminal server that have clients with touch screens connected to them.

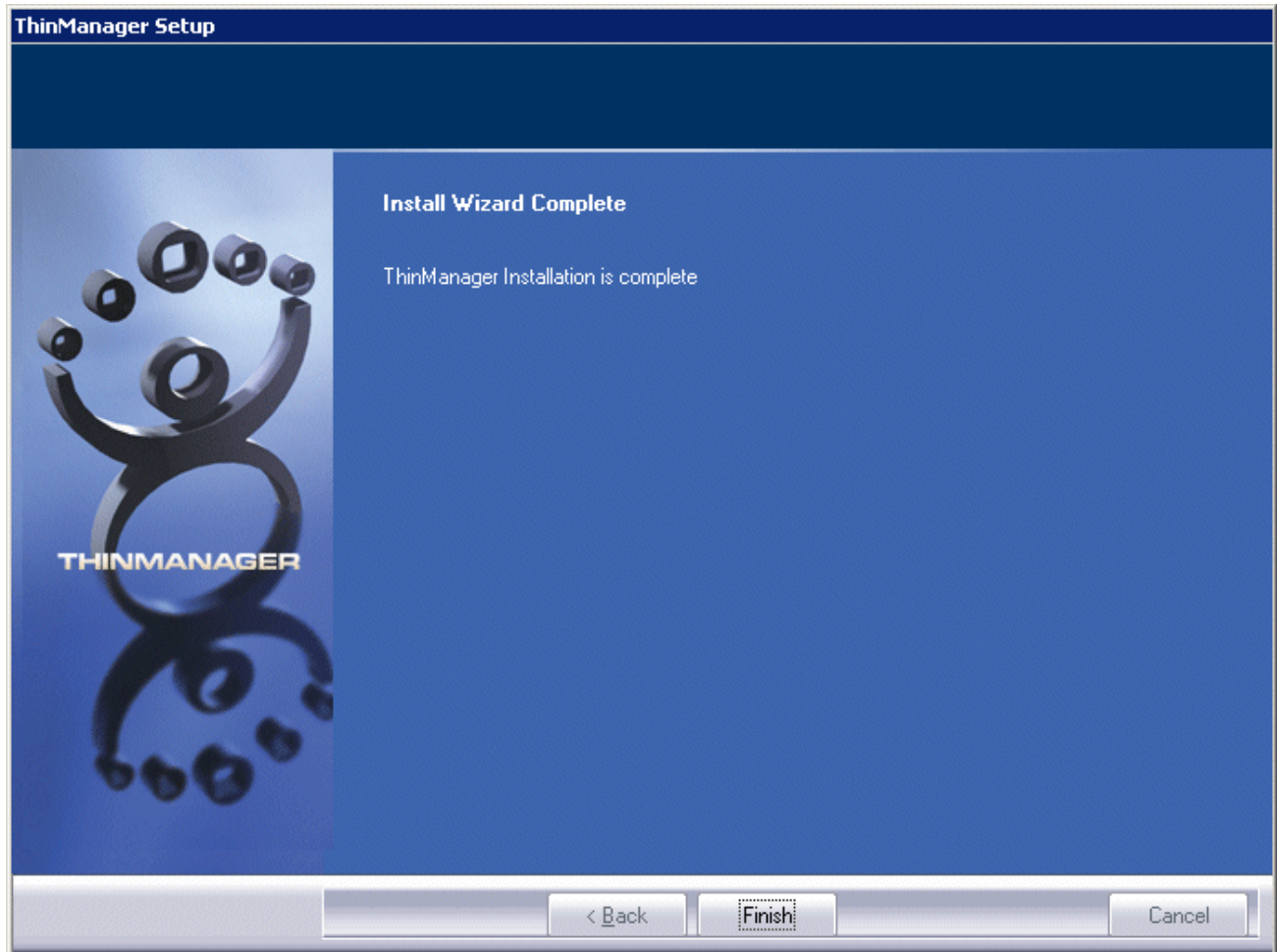
---

**Note:** If touch screens are being used with thin clients, the **ThinManager Utilities** program needs installed on every terminal server to provide the **Calibrate Touch** program for connected thin clients.

---

The **Browse** button will allow the user to change the path to the folder where ThinManager will be installed.

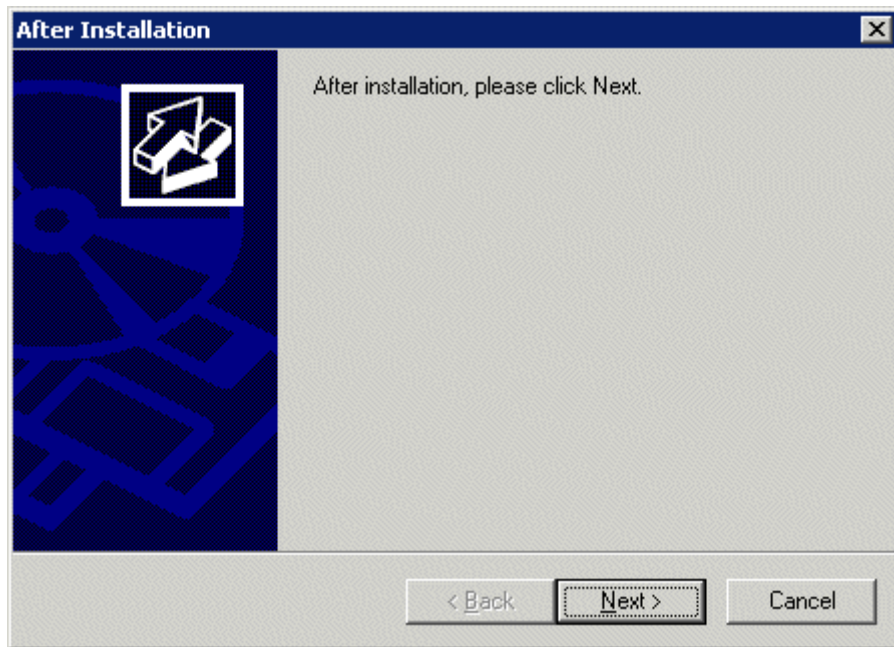
Check the desired components and select **Next**.



*Installation Wizard Completion*

When the wizard has finished select the **Finish** button.

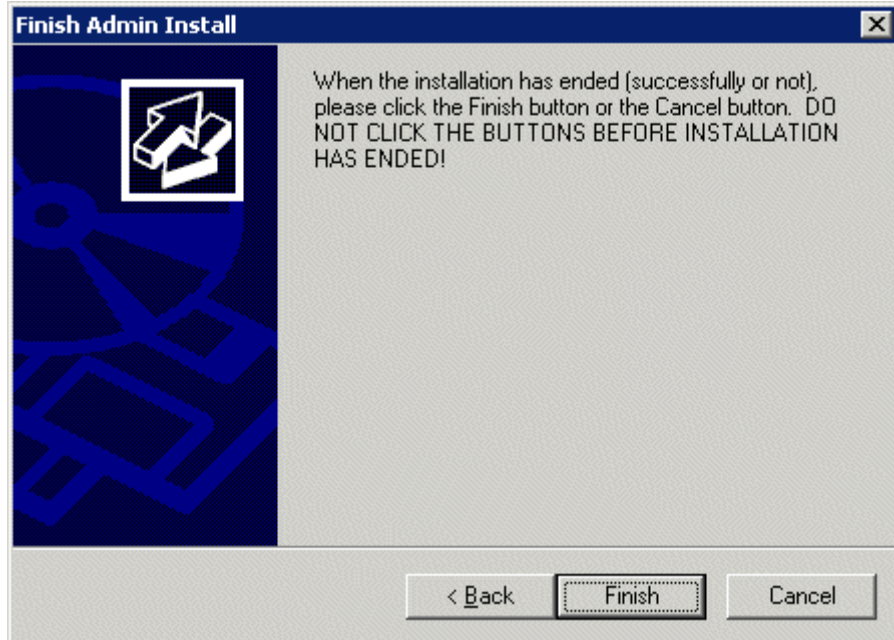




*After Installation Dialog*

After the ThinManager Setup wizard has finished, one needs to complete the installation through the Microsoft dialog boxes.

Select **Next** to continue.



*Finish Installation*

Select Finish to complete the installation.

ThinManager now needs licenses installed. See Licensing ThinManager for details.

## 3.1.2 Windows Server 2008

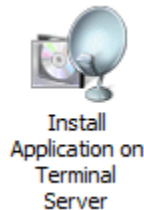
---

**Note:** The installation of the latest Microsoft .NET Framework may require a restart.

---

It is a common practice to install ThinManager on a terminal server but ThinManager is independent of terminal services and doesn't need to be installed on a terminal server.

Applications on terminal servers need to be installed in the **Install Mode**. Open the Control Panel and click on the **Install Application on Terminal Server** icon to start the installation wizard.



*Figure 1 - Install Application on Terminal Server Icon*

Once the wizard begins navigate to the ThinManager **setup.exe** program and continue with the wizard as described in Licensing ThinManager. ThinManager will install a 32-bit version on 32-bit operating systems and a 64-bit version on 64-bit operating systems.

The Install Mode can also be entered by typing **change user /install** at a command prompt. You can then run the **setup.exe** to install ThinManager.

Type **change user /execute** when finished installing to leave the Install Mode.

See Allow Inbound Traffic to Firewall for details on configuring the 2008 server to allow connections.

---

## 3.2 WinTMC Installation

The WinTMC program is a terminal client that is installed on a PC. When the WinTMC client is run it connects to a ThinManager Server, receives its configuration, and then connects to a terminal server and launches a session. The session is then displayed in the WinTMC client as a window or as a full screen, bringing terminal server computing to PCs.

---

**Note:** Do not install WinTMC on a ThinManager Server. The two programs will compete over the 2031 port.

---

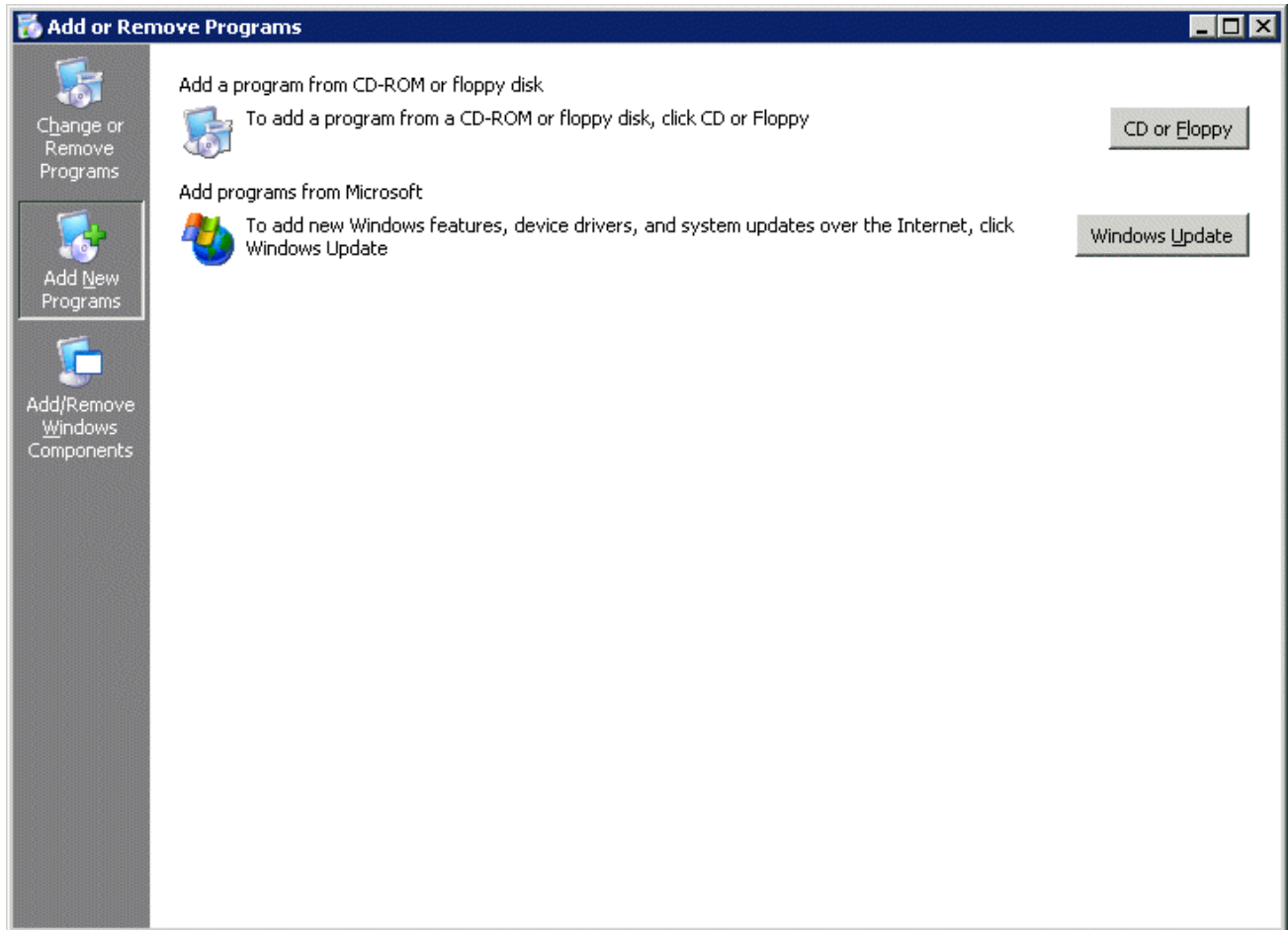
The WinTMC client needs to be installed on each PC that it is run on.

---

**Note:** Although PCs don't have as strict a requirement as terminal servers; it is a good idea to install the WinTMC client using the Add and Remove Programs feature.

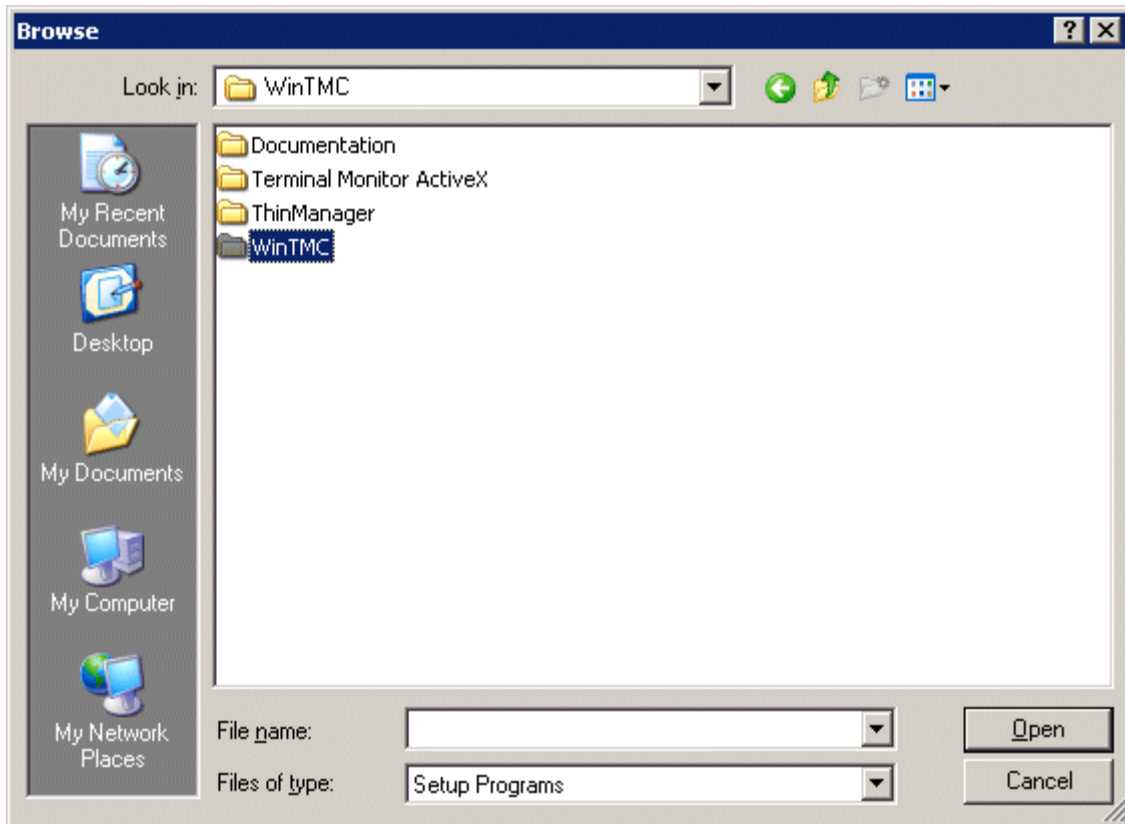
---

The ThinManager Install CD contains the installation for the ThinManager program and the WinTMC client. To install the WinTMC client on a PC select **Start > Settings > Control Panel > Add/Remove Programs** to open the **Add/Remove Programs** dialog box.



*Add/Remove Programs*

Select the **CD or Floppy** button on the **Add/Remove Programs Properties** dialog box to open the Installation wizard. The wizard will prompt for the insertion of the ThinManager CD. When the CD is inserted, the wizard will ask for the path to the setup program.

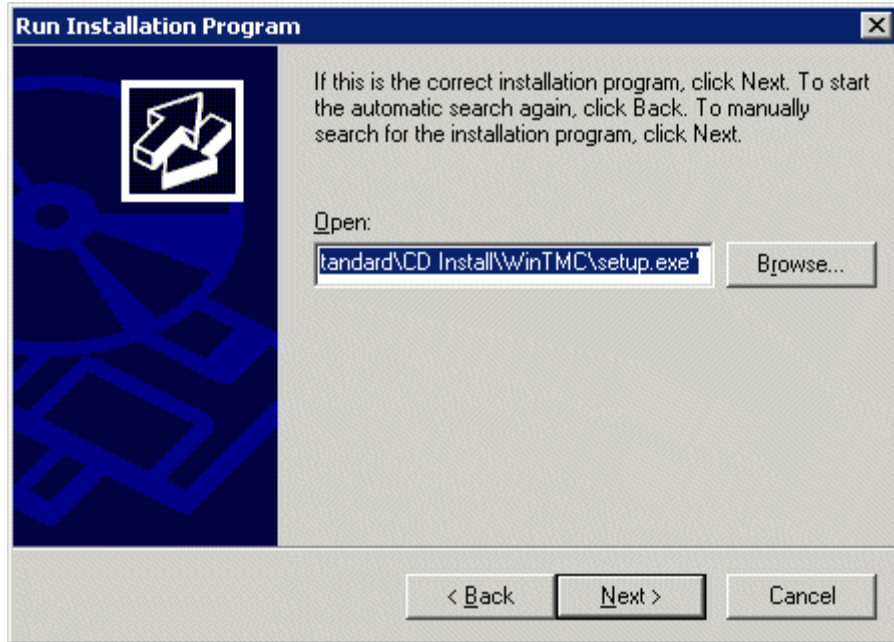


*Install CD File System*

The ThinManager CD has 4 folders.

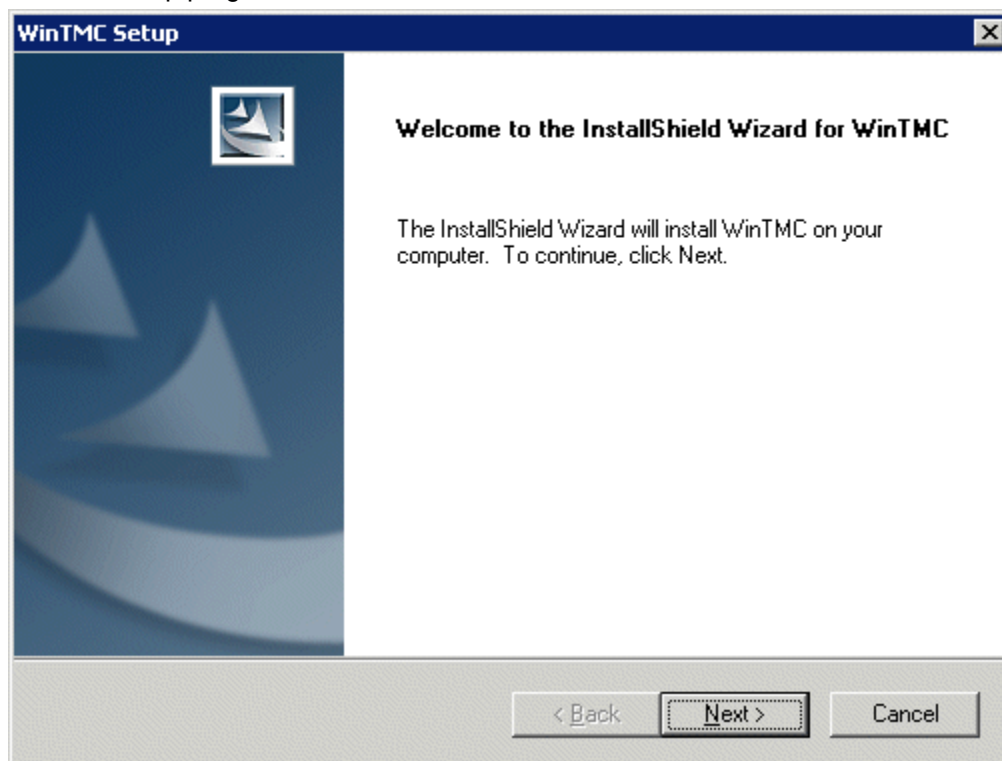
- **Documentation** – This folder contains a copy of this documentation in \*.pdf format.
- **Terminal ActiveX** – This folder contains the Terminal Monitor ActiveX and companion documentation. See TermMon ActiveX Control for details.
- **ThinManager**– This folder contains the ThinManager setup program.
- **WinTMC** – This folder contains the WinTMC setup program.

Browse to the **setup.exe** file in the WinTMC folder to install the WinTMC client.



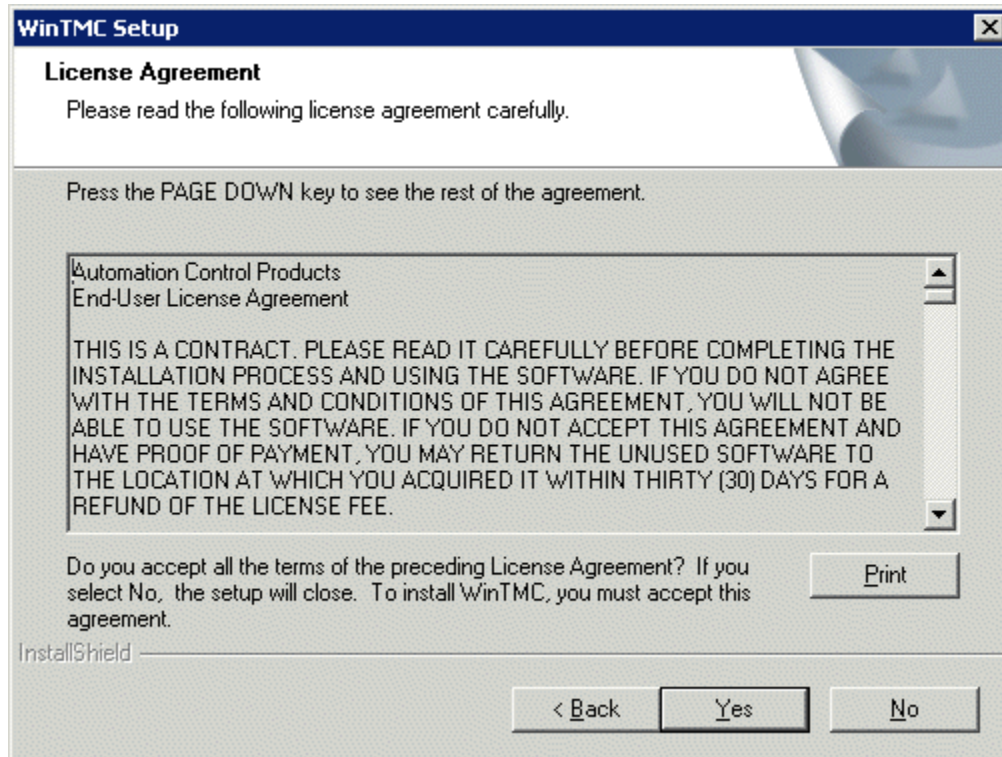
*Run Installation Program Window*

Once the WinTMC setup program is selected, click the **Next** button to continue with the install.



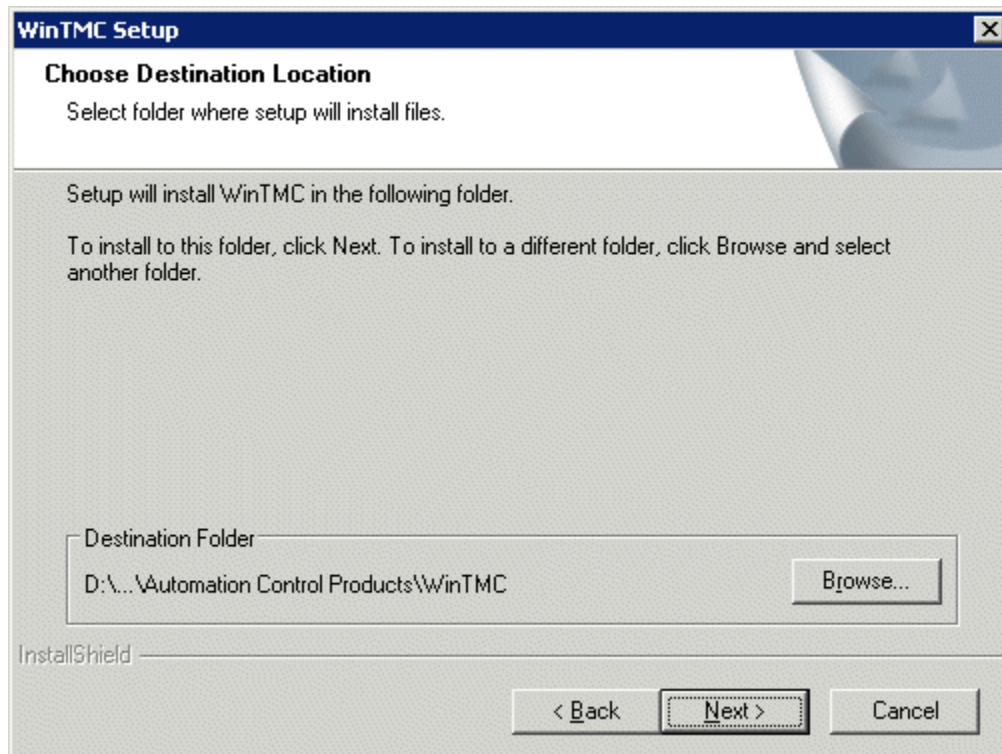
*WinTMC Setup Wizard*

The WinTMC Setup wizard will launch. Select **Next** to continue.



*License Agreement*

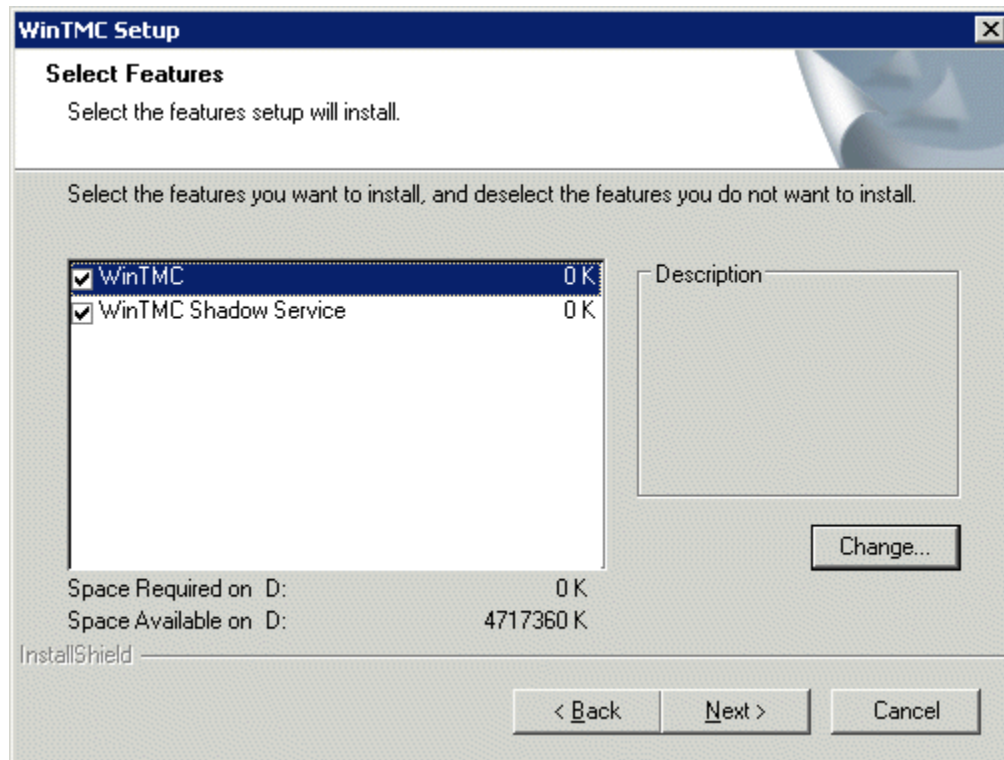
Read the End-User License Agreement (EULA). If you agree with the conditions select **Yes** to continue.



*Choose Destination Location*

The **Browse** button will allow the user to change the path to the folder where the WinTMC client will be installed.

Select **Next** to continue.



*Feature Selection*

The WinTMC installation program has two options.

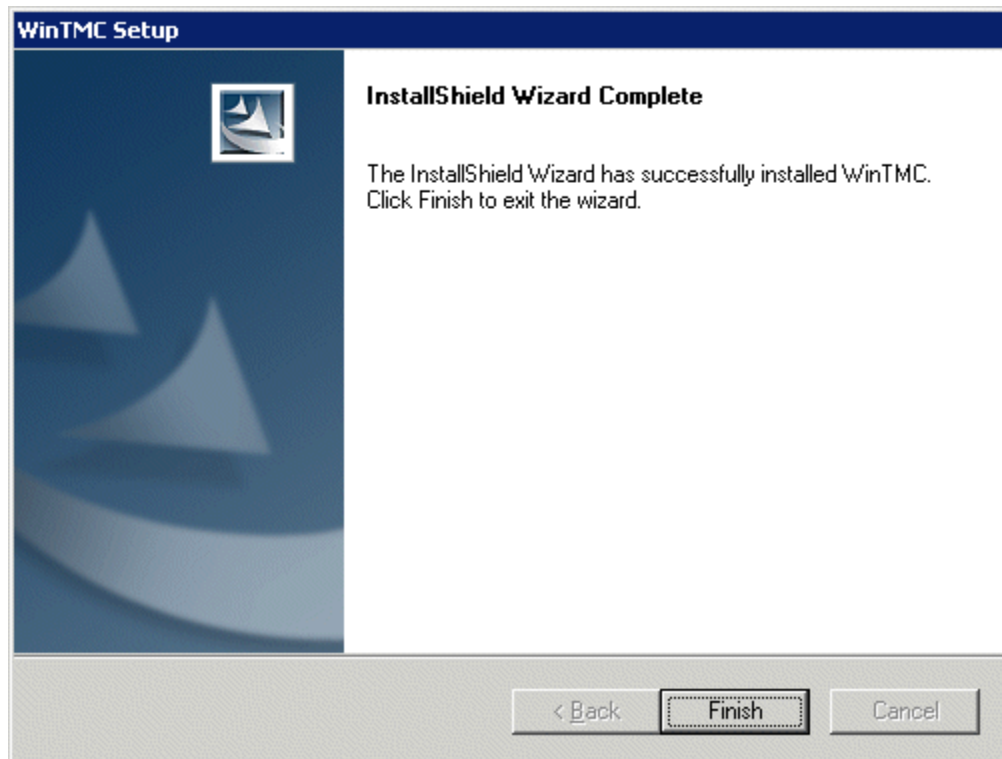
- **WinTMC** - This is the client application that needs to be installed to use the client.
- **WinTMC Shadow Service** - This optional program allows the PC to be shadowed from within ThinManager by authorized users.

---

**Note:** The WinTMC Shadow Service will function even when the WinTMC isn't active.

---

Select the **Next** button to continue with the WinTMC installation.



*WinTMC Installation Completion*

When the wizard has finished select the **Finish** button.

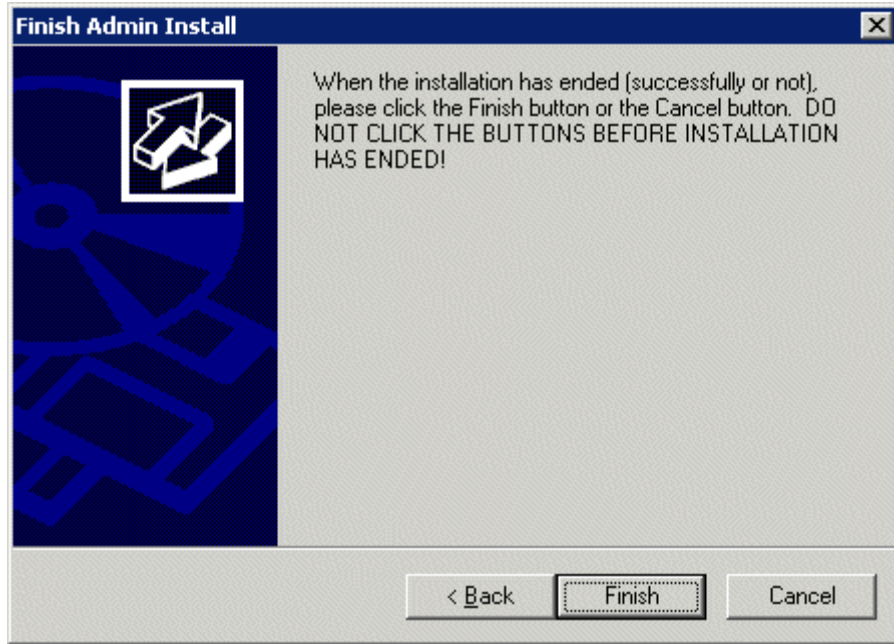


*After Installation Dialog*

After the WinTMC setup wizard has finished, one needs to complete the installation through the Microsoft dialog boxes.

Select **Next** to continue.





*Finish Installation*

Select ***Finish*** to complete the installation.